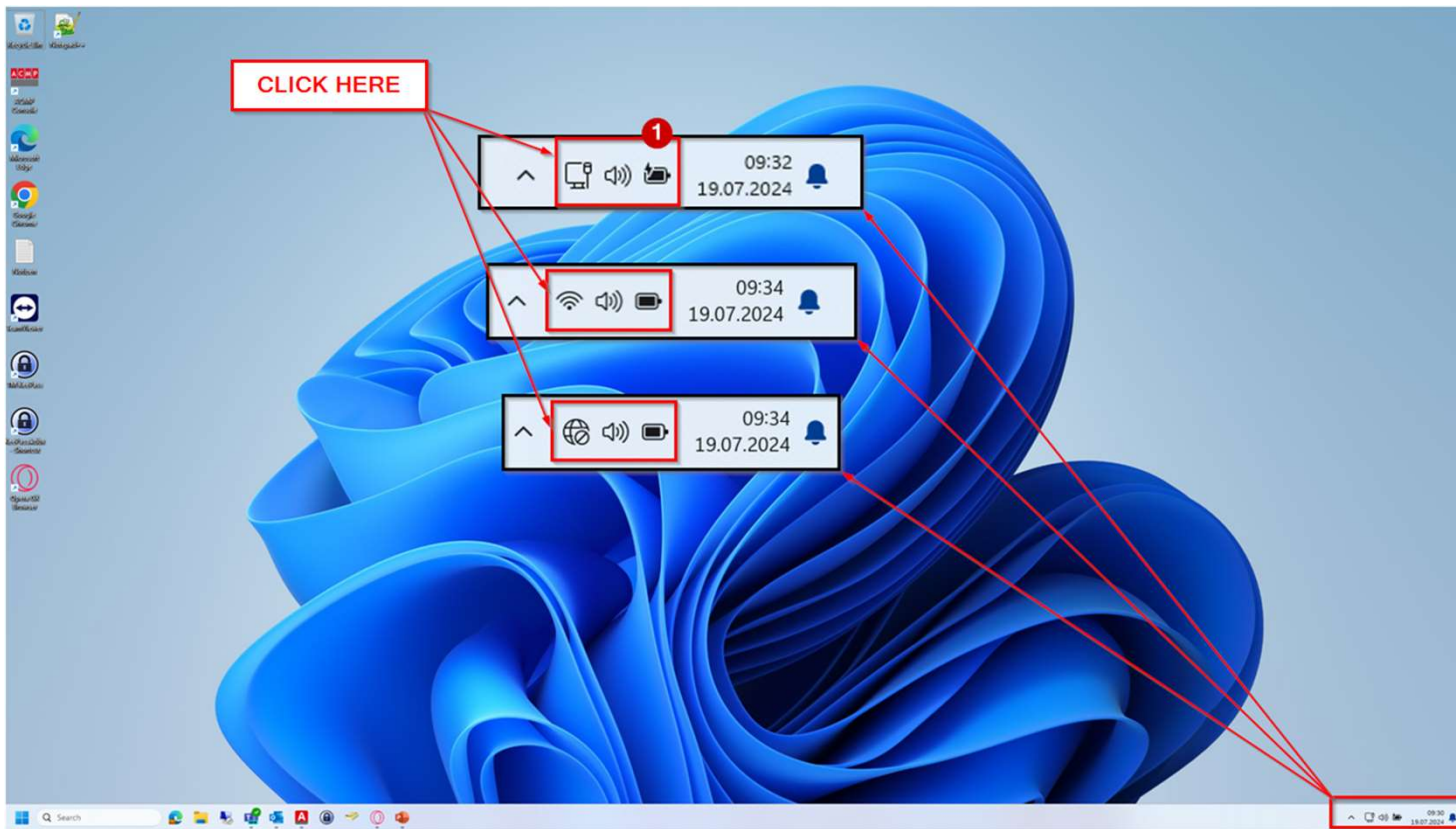
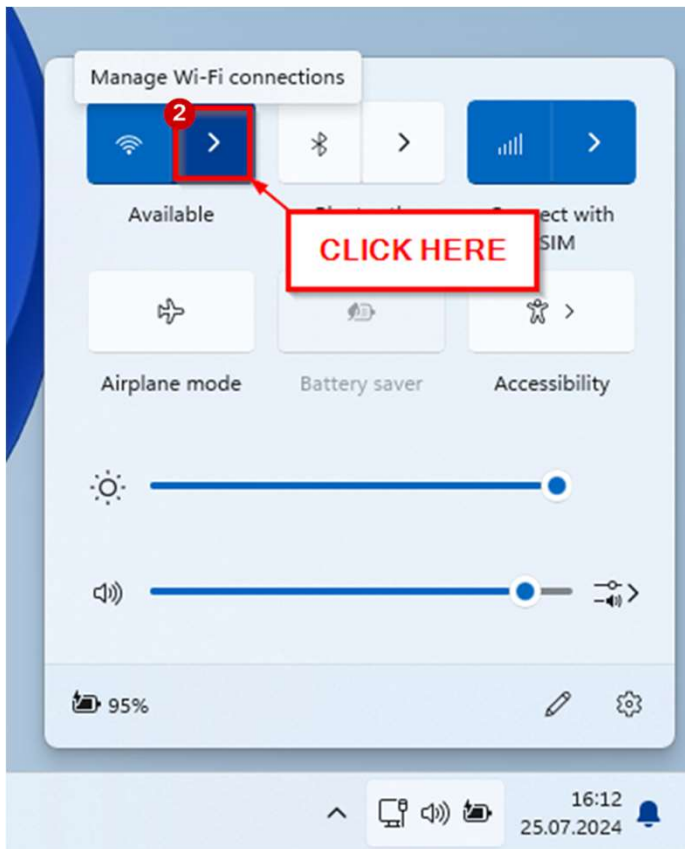


# SETUP WIFI FOR YOUR WINDOWS DEVICE

**STEP 1:** Open the WiFi Menu on your desktop as shown on the screenshot below.



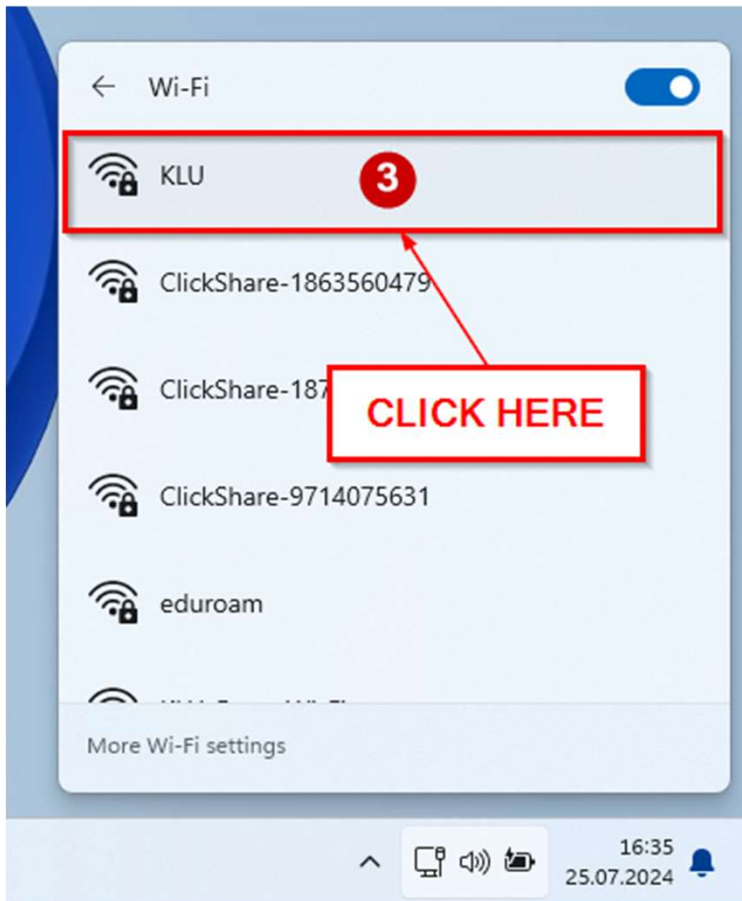
## SETUP WIFI FOR YOUR WINDOWS DEVICE



**STEP 2:** Hover over the arrow next to the Wi-Fi symbol and confirm with a left-click.

**Note:** Make sure to turn on Wi-Fi before connecting to any Wi-Fi network/hotspot.

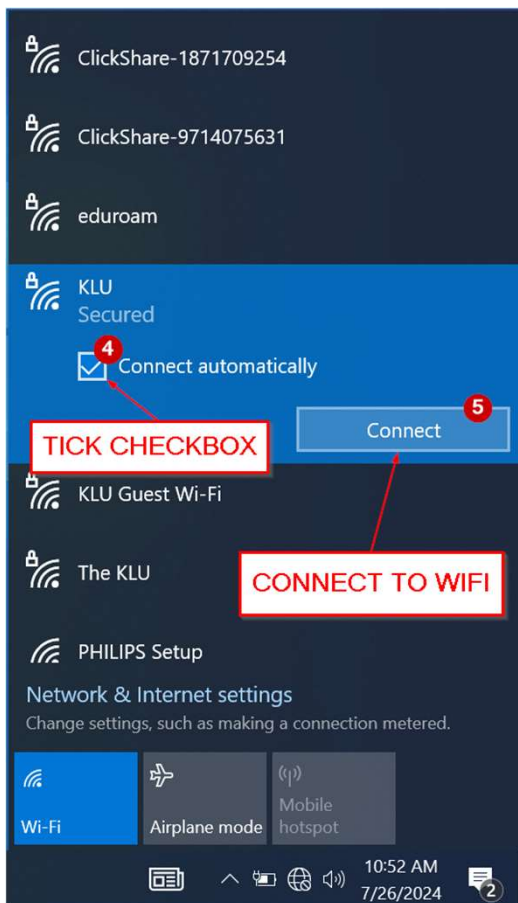
## SETUP WIFI FOR YOUR WINDOWS DEVICE



**STEP 3:** Choose „KLU“ network and left-click to connect.

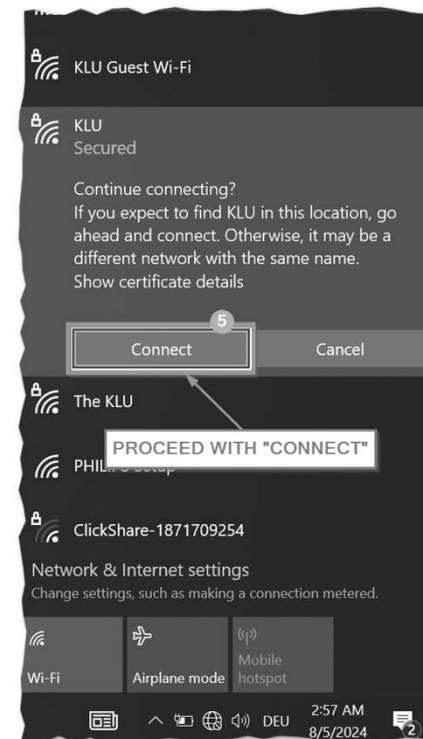
**Note:** For guests we have „KLU Guest Wi-Fi“. Just connect to it with the password „GwL20Ts!t24“ and **agree to the terms and conditions**. There is also a **QR-code** you could scan if you kindly ask the servicedesk.

## SETUP WIFI FOR YOUR WINDOWS DEVICE

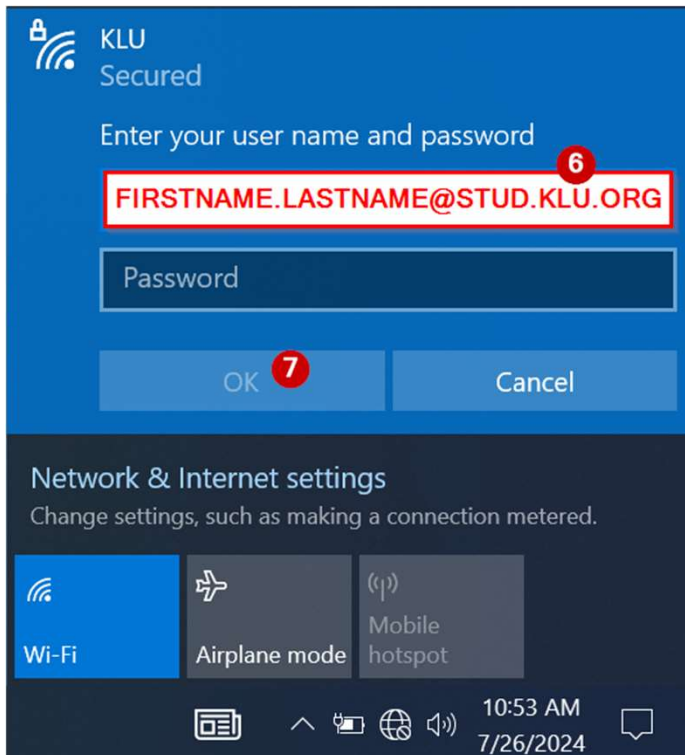


**STEP 4 and 5:** Tick the checkbox for automatic connection and click on the button „Connect“.

**Note:** You may be asked to confirm your chosen network. Click „Connect“ to proceed. (As shown in the screenshot to the right)



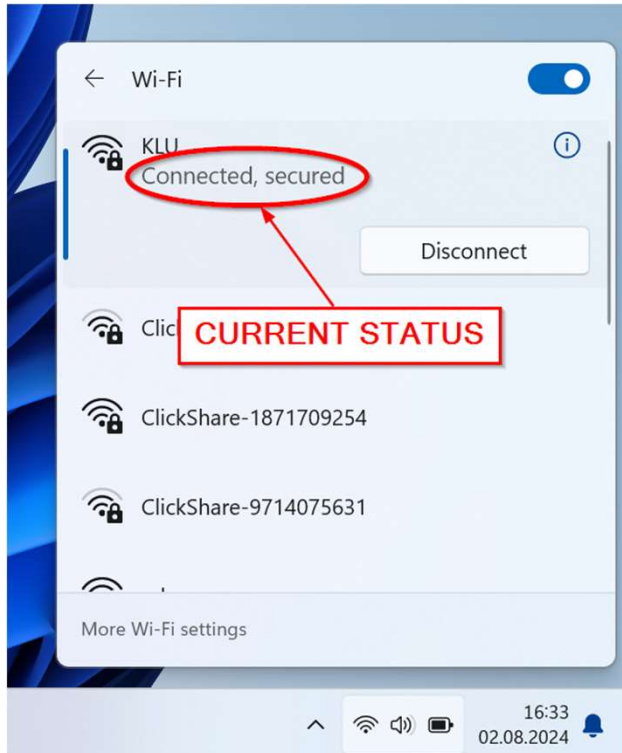
## SETUP WIFI FOR YOUR WINDOWS DEVICE



**STEP 6 and 7:** Enter your username and password and proceed by clicking OK.

**Note:** Your username is always „Firstname.Lastname@stud.klu.org“. Your password was sent to your private E-Mail address beforehand.

## SETUP WIFI FOR YOUR WINDOWS DEVICE



**STEP 8:** You successfully connected to the KLU WiFi!

**Note:** If you are connected to the WiFi and still have no internet you should contact IT services via the servicedesk. ([servicedesk@klu.org](mailto:servicedesk@klu.org))