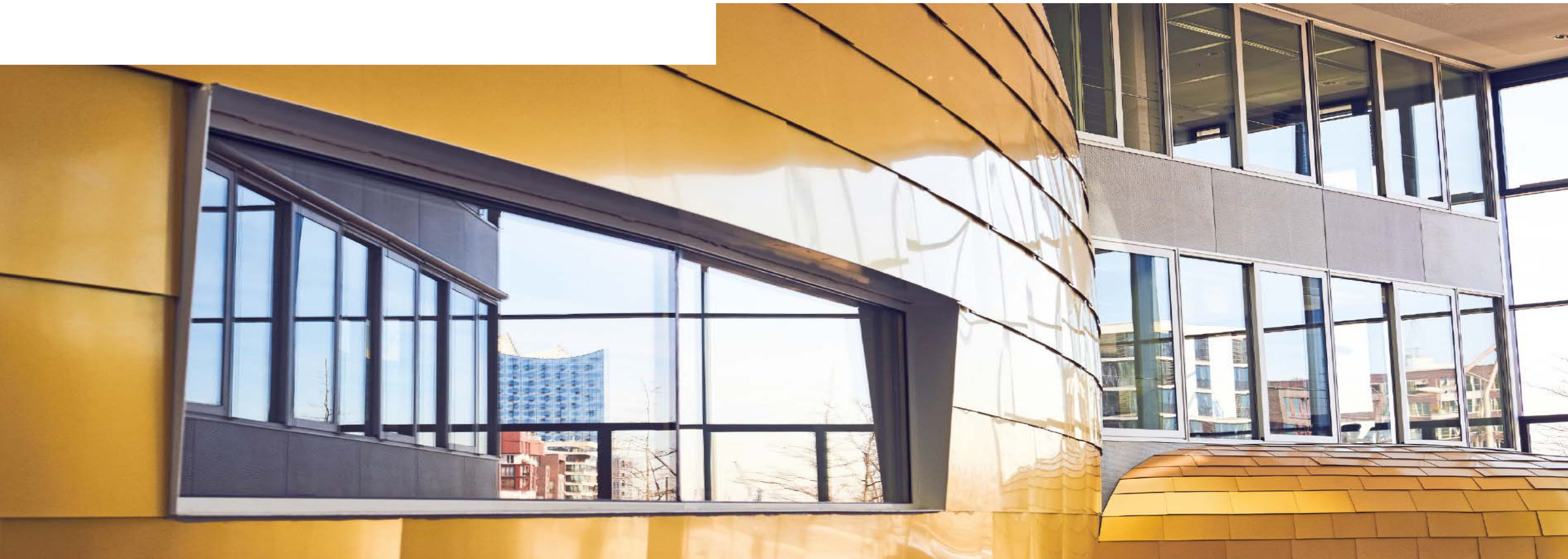


STUDENT INFO SESSION ACCOMMODATION



WHAT IS COVERED IN THIS SESSION?

Basic information on finding accommodation

- What does KLU offer?
- Where else to look?
- How to do it?

Open Q&A

- Please write your questions in the chat

Who can help?

- KLU Student Services: studentservices@klu.org
- Local expat websites or groups on social media

STUDENT ACCOMMODATION IN GERMANY

GENERAL INFO



Universities in Germany are usually not campus universities

Buildings and offices are often spread all over the towns, which makes it difficult to have “central” dormitories



Flatshares (“WohnGemeinschaft”) are most common in Germany



One main tenant, who rents the apartment from the landlord

The main tenant sublets rooms to the others



Flatshare rooms are usually unfurnished, unless it’s a sublet



Once someone moves out they will search for a new room mate (mixed gender flats are common)

HOME SWEET HAMBURG



<https://www.hamburg.de/contentblob/13366192/0ebb026234332c3ecfb15c7abe99ce41/data/karte-bezirke.jpg>

HOW TO FIND A WG

Flats are often small,
and you will live
close to each other

- There might be some difficulties culture wise in the beginning, communication is key!
- As you will spend a lot of time together, it is important that all people in a flat get along, which is why “WG-Castings” are quite common

Competition is
strong, especially
towards
September/October

- Make use of the filters when looking for flat shares, if you have specific requirements (for example you would prefer to live with just female or just male flat mates etc.)

Some useful sites to
look for flat shares

- [WG-gesucht](#)
- [WG Hamburg](#)
- [WG suche](#)
- [Kleinanzeigen](#)

FINDING A PRIVATE FLAT

These are among the most common websites:

- www.Immobilienscout24.de
- www.immowelt.de
- www.immonet.de

They are mostly meant for a German/German-speaking target group

Landlords usually don't offer video calls

Proof of your monthly income or similar is often required

- A proof of finances, such as blocked account or something similar, can sometimes be used instead

Most flats are unfurnished and sometimes without a floor or kitchen

- Furniture could be sourced from “Kleinanzeigen” or second-hand offers, kitchen is more difficult to arrange

You can rent a flat with others and may start your own WG

- This needs to be approved by the landlord

BEWARE OF SCAMS



Big apartment at very low price (70-100m² for less than EUR 1000)
Contact person is not in Hamburg, flat „belongs to a relative“
You would have to meet a third person for the keys



Fully furnished at no additional cost
Avoids a video call or sending recent pictures



You would have to transfer money in the first step without having seen the room or video chatted
Their cell phone won't work (if you get a number or real name at all)

WHAT CAN KLU OFFER?



Help and support in finding something on your own -> **This should be your first priority**



KLU offers a limited number of both short- and long-term rooms

Some rooms are in the public dormitory of Kiwittsmoor
Some are part of other private providers



Information on the topic on our online platform Moodle

WHEN AND HOW TO APPLY?

Application period
is from June 6 - 12.

- To ensure that later applicants could also receive a room
- Eligible are students who have accepted their place of study at KLU and started the enrollment process (Email "Welcome to KLU")
- If you received a room in the first round, another application is not possible

On June 6,
application form is
sent out

- Each year, the number of applications far exceeds the number of available rooms
- Lots will be drawn to assign them to ensure fair chances to all applicants
- You will be notified if you received a room in the days after the deadline

We require that you either
have received a visa by
August 15 or that you
have had your visa
appointment by that day!

- Otherwise, chances are high that you will not be able to arrive in Hamburg by September 1, so your room will be given to someone who will be here from Day 1.

KIWITTSMOOR DORM



Located in the very north of HH

Distance may be long, but the rent is low and community in the dorm is good



Fully-furnished rooms in a shared flat

Own room, but kitchen and toilet facilities are shared among the tenants!



Public transport: U1 to Kiwittsmoor / 50 minutes travel time to KLU – reachable with the transportation ticket you will receive from KLU



Rent: EUR 345 for short-term
~ EUR 315 for long-term

Long-term contracts are made directly between you and the Studierendenwerk



DORM OF THE DRK (DEUTSCHES ROTES KREUZ)



Located centrally in the „Grindelviertel“

Close to the city center in an area with many small restaurants, cafès, and stores



Fully-furnished rooms in a shared flat

Own very small room, kitchen and toilet facilities are shared among the tenants!

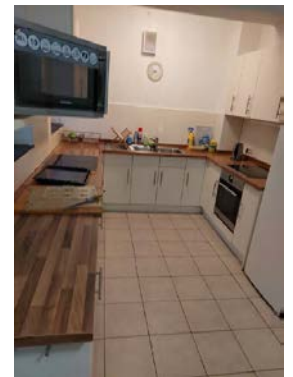
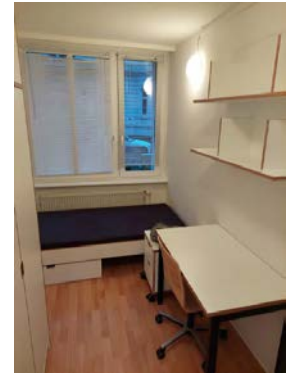


Public transport: U1 Hallerstraße, S Dammtor, Bus line 4/5 Grindelhof -> 25 minutes to KLU



Rent: EUR 300
Deposit: EUR 500

Rooms are for the long-term, i.e. you will receive it for the whole period of your studies at KLU



FAQ: KLU ACCOMMODATION



When do I apply?

- The first application period is from June 6 to June 12. You will receive an email with the application documents and more information in due time.

When can I move in?

- All the rooms are available from September on, moving in earlier is not possible, as there will still be other students living in them

What are the tenancy periods?

- The short-term rooms are available from September to December
 - Moving in earlier than September or later than December is not possible
- Long-term means that you will sign the contract for the duration of your degree program

How are the rooms allocated?

- If there are more applications than available rooms, the final decision will be made by drawing lots

Can I apply even if I have not received my visa, yet?

- Yes, an application is possible, but we require proof of your visa or that you had the necessary appointment by August 15. Otherwise, if you had been assigned a room, it will be re-assigned.

WHAT IF I HAVEN'T RECEIVED A ROOM?



Don't panic!



There will be a waiting list through which KLU sends information about new availabilities



Look at the information on Moodle to see what other options there are



Start applying for private dormitories and kindly ask if they can put you on a waiting list, as well



Try networking: Have a look at Facebook or other social media groups

BE PATIENT



Hamburg is very popular



People from all over Germany and the world come here to study or to work



Each offer you see will have many interested persons texting the landlord

TIP

- Be open for areas that might be less popular
- Looking in areas such as Bergedorf, Bramfeld and Hamm might yield a few more results

**ANY FURTHER QUESTIONS?
PLEASE WRITE THEM IN THE CHAT**

